

UK Air Masses

1. What is an air mass?

2. Where does the tropical continental air mass come from?

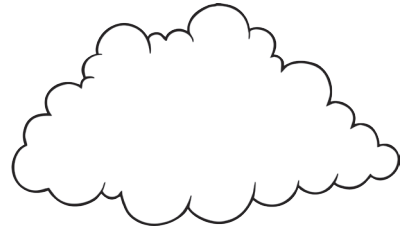
- a. North Africa b. The Arctic c. France

3. What are the characteristics of the tropical continental air mass? Circle the correct descriptions.

- Hot Cold Moist Dry

4. Where does the Polar Continental air mass come from?

- a. The Sahara Desert
b. North Pole
c. South Pole



5. What are the characteristics of polar continental air? Circle the correct descriptions.

- Hot Cold Moist Dry

6. Which is the most common air mass in the UK?

- a. tropical maritime
b. polar maritime
c. tropical continental



7. Where does the polar maritime air mass come from?

- a. Iceland
b. The Azores
c. Northern Canada or Greenland

8. What are the characteristics of the polar maritime air mass?

- Hot Cold Moist Dry

9. How does the polar maritime air mass change as it crosses the Atlantic Ocean?

- a. Air mass becomes warmer with increased moisture.
b. Air mass becomes cooler and drier



10. How many air masses affect the UK?

- a. Ten
b. Four
c. Six

UK Air Masses Answers

1. An air mass is a large 'chunk' of **air** that has a certain **temperature** and humidity depending on where it has come from.

2. a. North Africa

3. Hot Dry

4. b. North Pole

5. Cold Dry

6. b. polar maritime

7. c. Northern Canada or Greenland

8. Cold Moist

9. a. Air mass becomes warmer with increased moisture.

10. c. Six